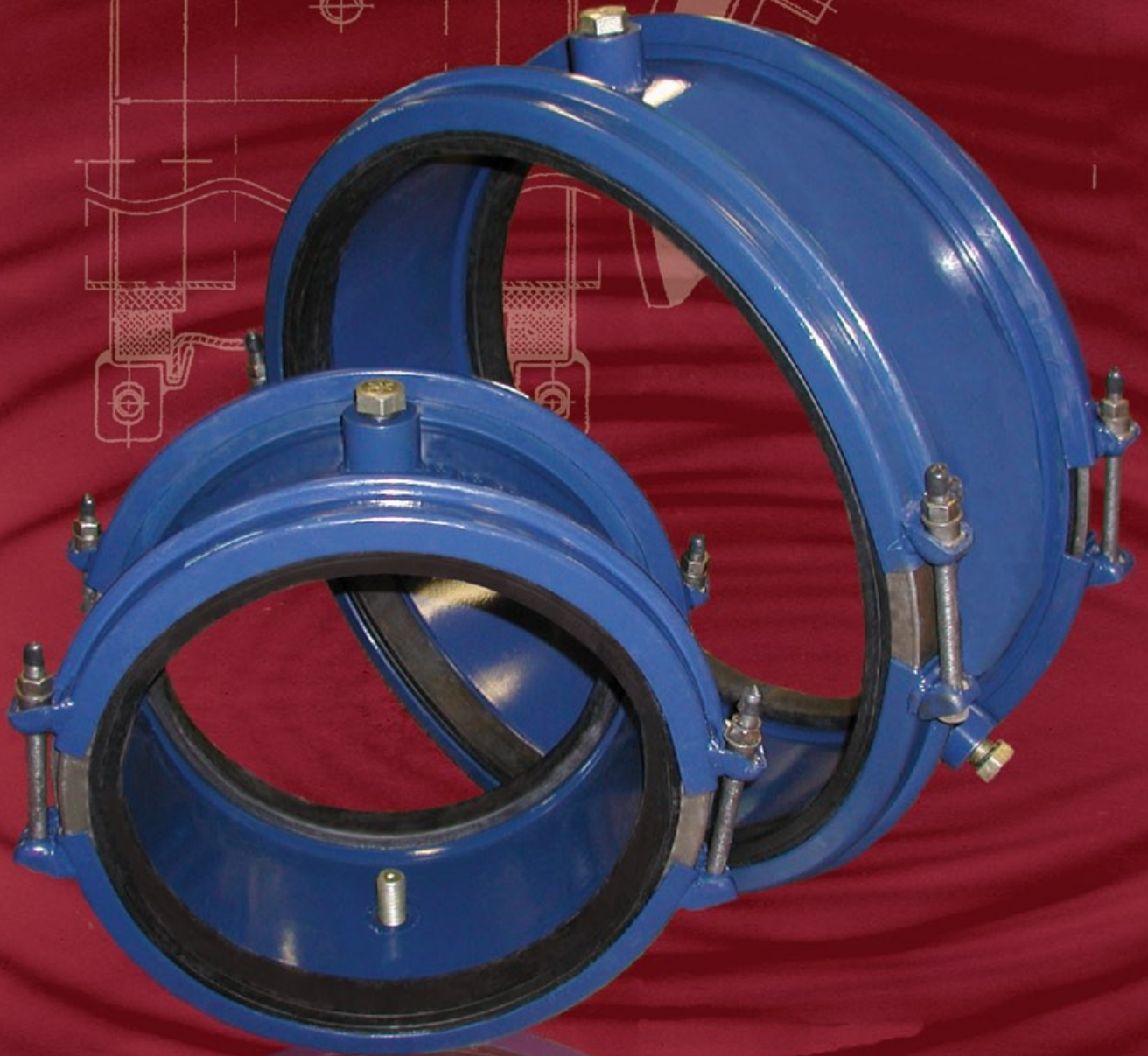


# Large Diameter Hymax<sup>®</sup> Coupling



*Total Piping Solutions, Inc.*

# Large Diameter Hymax 2000

## The Large Diameter Hymax 2000 Coupling Line

is suited to a wide range of pipe joining conditions, and each size will replace between three and four dedicated range couplings in your inventory.

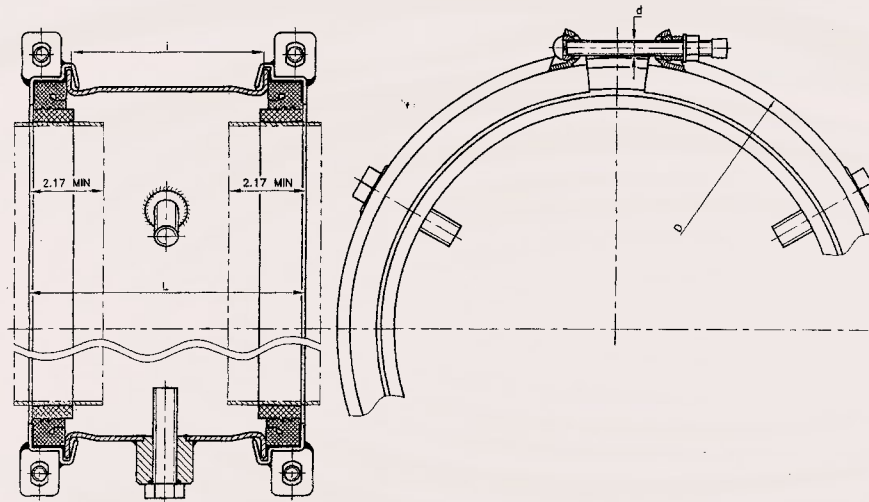
Each coupling will join pipes with diameter differences up to 2.1 inches. The Large Diameter Hymax 2000 coupling series can handle pipe end gaps up to 7.5 inches, and will accommodate angular deflections of at least 8 degrees.

The Hymax 2000 offers an efficient range adjustable pressure assisted Hydraulic Sealing system. The gasket is compounded of an NSF 61 Registered EPDM material.

The Large Diameter Hymax 2000 is a stab type coupling requiring no disassembly. The installer simply adjusts the gasket and tightens two bolts on each end of the coupling to the required torque. All work is performed from the topside of the coupling, eliminating the need for extra excavation and under-dig for the wrench.

The Large Diameter Hymax 2000 is easily handled due to the durable nature of its superior light-weight materials of construction. The coupling is equipped with a corrosion resistant coating of fusion-bonded epoxy, and comes with a stainless steel spanner and 304 stainless steel nuts and bolts.

\*Refer to Hymax Installation Instructions for Centering Pin Instructions.



Krausz



Special Installation Instructions are affixed to the product. Carefully read before proceeding to install.

Nominal O.D.	Part Number	Pipe Class	Overall Range (inches)	Low Range (inches)	High Range (inches)	Diameter (inches)	Overall Width	Coupling Middle Ring	Pressure	Weight (lbs.)
14	2000-1710-260	14"DIP, AC, 14" 100/150/200 AC, 16" IPS	15.00-17.10	15.00-16.10	16.02-17.10	21.00	11.60	8.0	260	75
16	2000-1920-260	16"DIP, 16" Pit Cast, 16" AC/100/150/200, 18" IPS	17.10-19.20	17.10-18.19	18.11-19.20	23.15	11.60	8.0	260	85
18	2000-2160-232	18"DIP, 18" Pit Cast, 18" 100/150/200 AC, 20" IPS	19.50-21.60	19.50-20.59	20.51-21.60	25.55	11.60	8.0	232	95
20	2000-2360-232	20"DIP, 20" Pit Cast, 20" 100/150ME AC	21.50-23.60	21.50-22.60	22.52-23.60	27.56	11.60	8.0	232	101
24	2000-2670-232	20" 100/150/200 AC, 24" DIP, 24" Pit Cast	24.60-26.70	24.60-25.67	25.59-26.70	30.63	11.60	8.0	232	115

\*The Hymax Trademark and Patent is property of Krausz Industries, Ltd.

**Note:** To extend product life in corrosive environments poly-wrapping and/or cathodic protection of the coupling is recommended.



Total Piping Solutions, Inc.  
 1760 Haskell Road, Olean, New York 14760  
 Tel: 716-372-0160 Fax: 716-372-1767  
 E-mail: sales@tps.us  
 Visit Our Website at: <http://tps.us>

